

Trunk Lid

Replacement/Adjustment

1. Pull the harness and trunk lid opener cable out of the trunk lid.

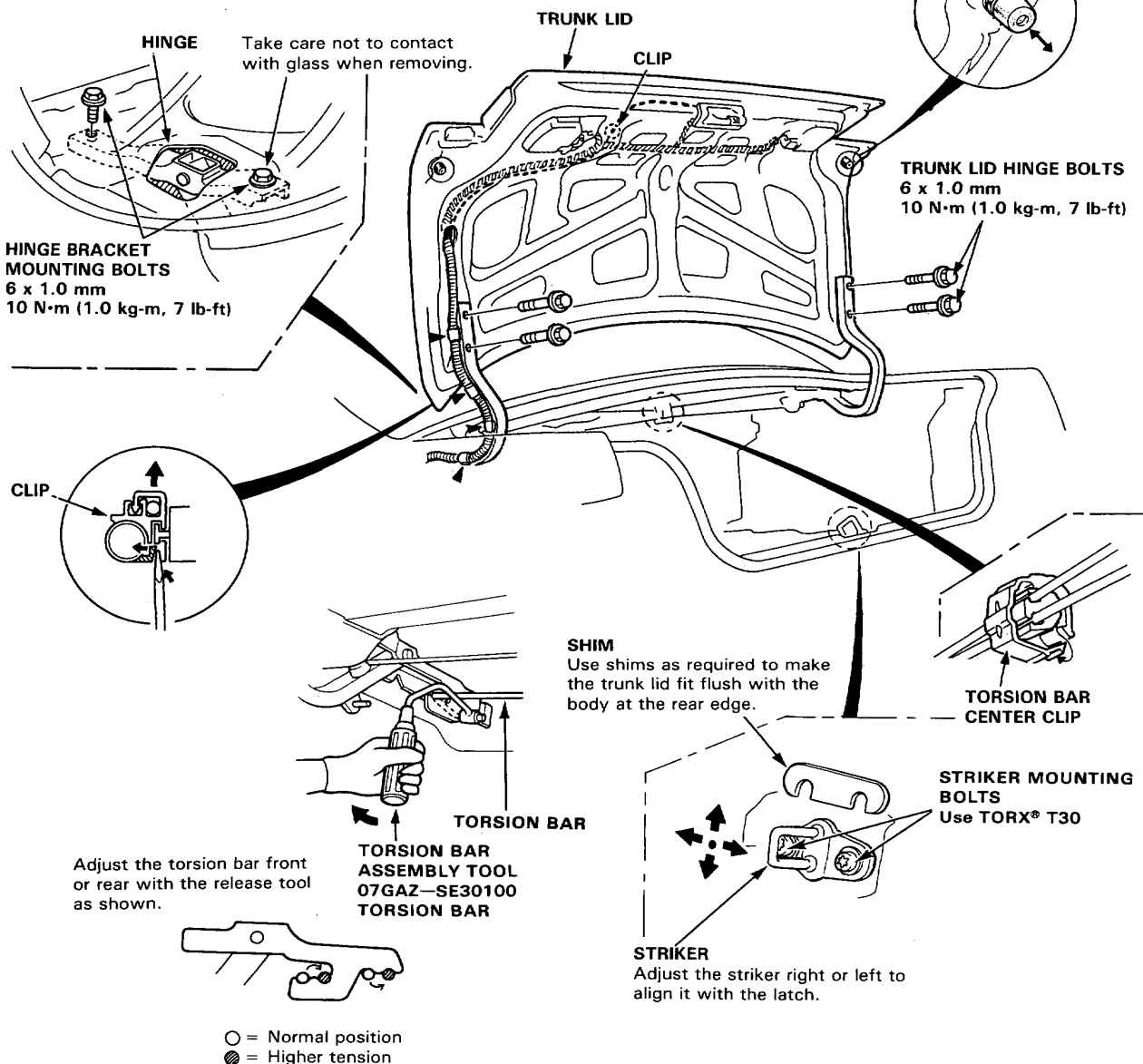
NOTE: Before pulling out the wire harness, tie a string to the end of it so you can pull it back in when the trunk lid is reinstalled.

2. Remove the trunk lid hinge bolts, then lift off the lid.
3. Remove the torsion bar using an assembly tool.
4. Remove the rear shelf.
5. Remove the hinge bracket mounting bolts, then remove the hinges from the trunk.
6. Assemble in the reverse order.

NOTE: Before tightening the hinge bolts, check the adjustments shown below:

TRUNK LID EDGE CUSHION

Turn as necessary, to make the trunk lid fit flush with the body at front and side edges.



Wiring Diagrams

Index

Air Conditioner	17	Lights, Interior	
Anti-Lock Brake System (ALB)	14	Courtesy Lights	3
Automatic Transmission Control System	14	Dashlight Brightness Control	6
Battery	1	Dome Lights	3
Blower Controls	17	Glove Box Light	6
Charging System	1	Trunk Light	6
Cigarette Lighter	10	Vanity Mirror Light	6
Clock	10	Lighting System	6
Cooling Fan Control	16	Mirror, Power	6
Cruise Control System	12	Seat, Power	13
Defogger, Rear Window	11	Starting System	1
Door Lock, Power	12	Stereo Sound System	10
Fuel and Emissions	16	Sunroof	11
Gauges	2	Turn Signal / Hazard Flasher System	13
Headlight Adjuster System	4	Warning System	
Horns	4	ALB Warning	2
Ignition Switch	1	Brake Warning	2
Ignition System	1	Charge Warning	2
Indicators		Check Engine Warning	2
Cruise Control Indicator	2	Hazard Warning	2
Trunk Open Indicator	2	Light-on Warning	5
High Beam Indicator	2	Oil Pressure Warning	2
Shift Lever Position Indicator	4	Washers	
Turn Signal Indicator	2	Windshield	13
Integrated Control Unit	5	Headlight Washer	13
Lights, Exterior		Windows, Power	7
Back-up Lights	10	Wipers	
Brake Lights	3	Windshield	7
Hazard Lights	2		
Headlights	6		
License Plate Lights	6		
Marker Lights	6		
Taillights	6		